



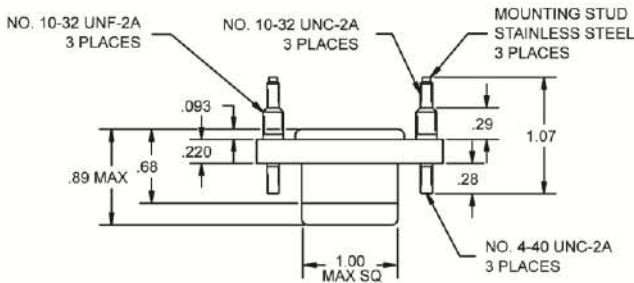
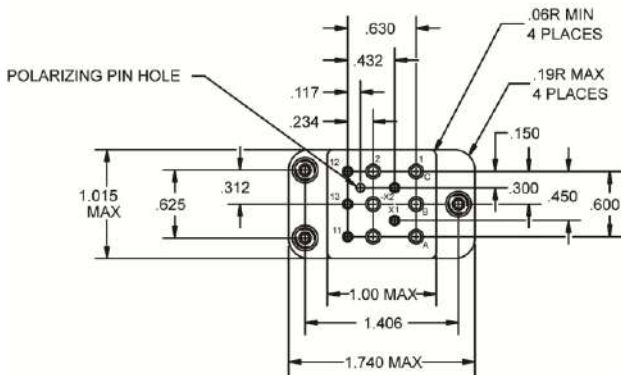
**Basic socket series designation for:**

Series KD

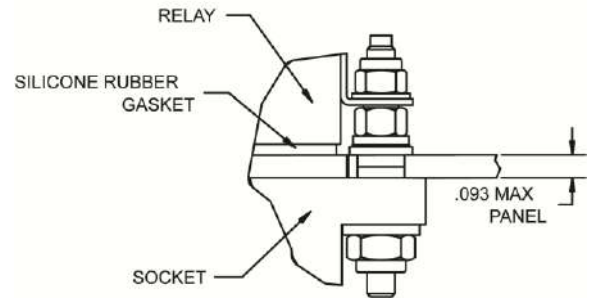
**NOT qualified but designed to the standards and requirements of::**

MIL-S-12883

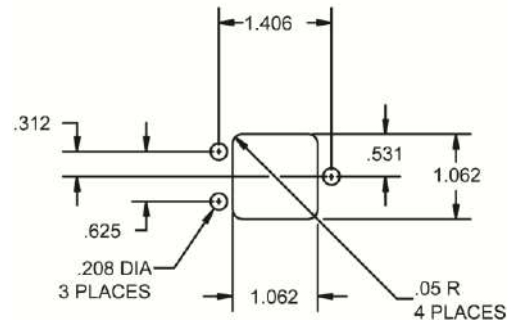
### SOCKET DRAWING



### HARDWARE MOUNTING MOUNTING DETAIL 3 PLACES



### MOUNTING DIMENSIONS SUGGESTED MOUNTING HOLE LAYOUT



## GENERAL CHARACTERISTICS

1. Supplied with mounting hardware and No. 12 contacts and crimp for power terminals; No. 16 contacts and crimp for coil terminals.

2. Standard tolerances .xx ±.01; xxx ± .005

3. Weight .132 lbs. max

4. Temperature range -70° C to +125° C

#### AMERICAS.

Tel: +1 714-736-7599

<http://www.esterline.com/powersystems>

#### EUROPE.

Tel: +33 3 87 97 31 01

Fax: +33 3 87 97 96 86

#### ASIA

Tel: +852 2 191 3830

Fax: +852 2 389 5803