



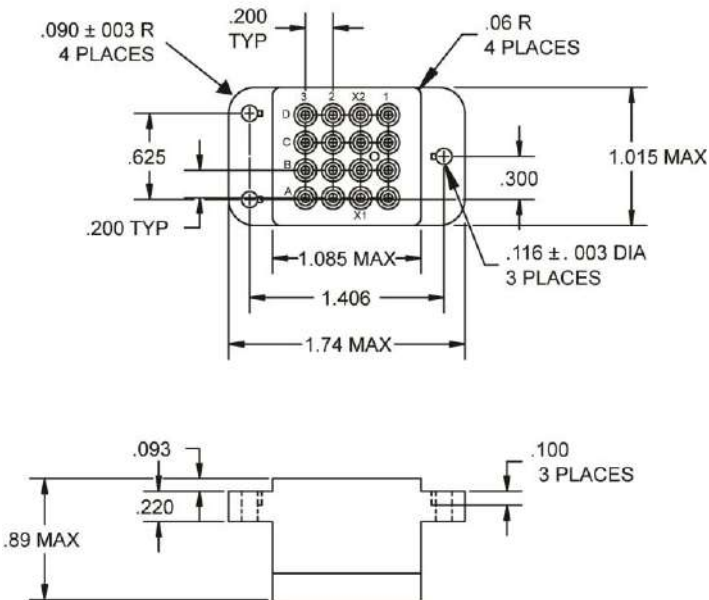
**Basic socket series designation for:**

Series KL, TDH-7050, TDH-7060, TDH-7070

**Designed to the standards and requirements of::**

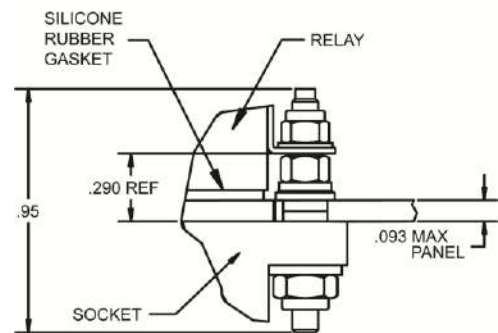
MIL-DTL-12883/40

### SOCKET DRAWING

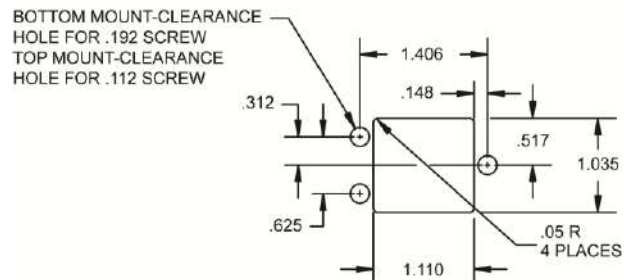


### HARDWARE MOUNTING

MOUNTING DETAIL 3 PLACES



### MOUNTING DIMENSIONS



### GENERAL CHARACTERISTICS

1. Supplied with mounting hardware No. 16 contacts, No. 16 crimp.	
2. Standard tolerances	.xx ± .01; xxx ± .005
3. Weight	.118 lbs. max
4. Temperature range	-70° C to +125° C

**AMERICAS.**

Tel: +1 714-736-7599  
<http://www.esterline.com/powersystems>

**EUROPE.**

Tel: +33 3 87 97 31 01  
Fax: +33 3 87 97 96 86

**ASIA**

Tel: +852 2 191 3830  
Fax: +852 2 389 5803