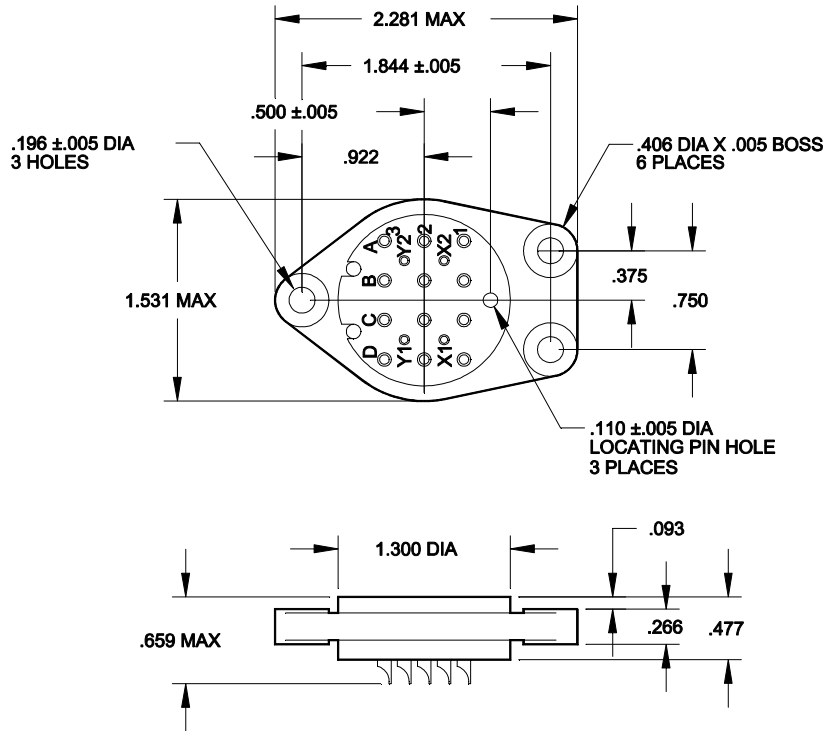




SOCKET DRAWING / PLAN DU SOCLE

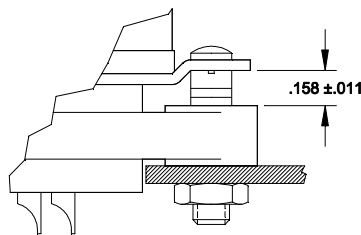


Basic socket series designation for :

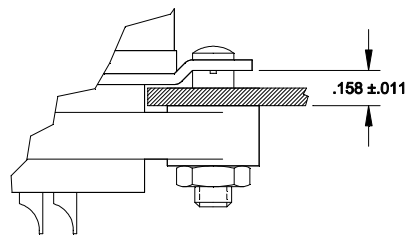
V110, V210, V310, V710,
F410, P510

Meets the requirements of :
MS 25462-1

HARDWARE MOUNTING / DETAIL MONTAGE



**TOP MOUNTED
MONTAGE SUR STRUCTURE**



**BOTTOM MOUNTED
MONTAGE SOUS STRUCTURE**

**GENERAL CHARACTERISTICS
CARACTERISTIQUES GENERALES**

Dimensions in mm
Tolerances, unless otherwise specified, ±0.25mm

Supplied with mounting hardware (SO-1021-7127) or without mounting hardware (SO-1021-7126)

Fourni avec visserie (SO-1021-7127) ou sans visserie (SO-1021-7126)

Temperature range

Température d'utilisation

-55° C to +125° C.

Weight

Masse

36g max.

AMERICAS.

Tel: +1 714-736-7599

<http://www.esterline.com/powersystems>

EUROPE.

Tel: +33 3 87 97 31 01

Fax: +33 3 87 97 96 86

ASIA

Tel: +852 2 191 3830

Fax: +852 2 389 5803