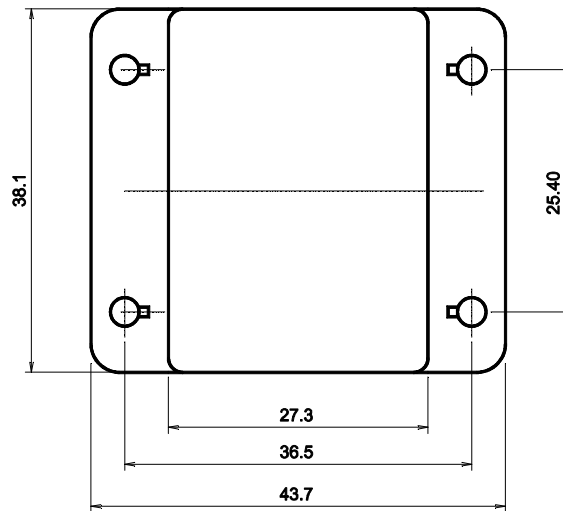


Basic socket series designation for:  
SERIES F600 (DC Coil),  
F601 (AC Coil)



## GENERAL CHARACTERISTICS CARACTERISTIQUES GENERALES

<b>Crimp tool #22</b> <i>Pince à sertir #22</i>	M 22520/1-01 with turret M 22520/1-02 or 7-03
<b>Insertion and extraction tool #12</b> <i>Outil d'insertion et d'extraction #12</i>	M 81969/14-03
<b>Crimp tool #16</b> <i>Pince à sertir #16</i>	M 22520/1-01 with turret M 22520/1-02 or MS 3191-1
<b>Insertion and extraction tool #16</b> <i>Outil d'insertion et d'extraction #16</i>	M 81969/14-03
<b>Weight</b> <i>Poids</i>	65g max
<b>Temperature range</b> <i>Température d'utilisation</i>	-70° C to +125° C

### AMERICAS.

Tel: +1 714-736-7599  
<http://www.esterline.com/powersystems>

### EUROPE.

Tel: +33 3 87 97 31 01  
Fax: +33 3 87 97 96 86

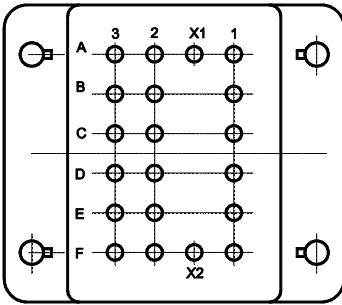
### ASIA

Tel: +852 2 191 3830  
Fax: +852 2 389 5803

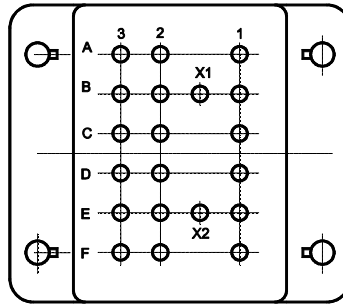
**TERMINAL LAYOUT**  
*TYPE DE SORTIE*

Dimensions in mm  
Tolerances, unless otherwise specified, ±0.25mm

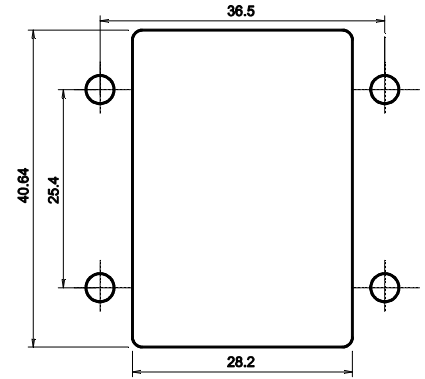
CODE A S600



CODE B S601

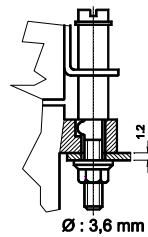


**MOUNTING HOLE LAYOUT**  
*DECOUPE DE LA STRUCTURE*



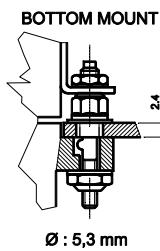
**MOUNTING HARDWARE**  
*TYPE DE VISSERIE*

CODE 7 : 05 284 15  
LOOSE METRIC M3 HARDWARE  
TOP MOUNT

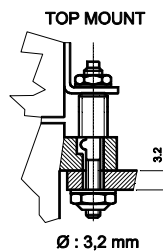


FOR RELAYS WITH CAPTIVE SCREWS (CODE B)  
MOUNTING TORQUE : 0,45 ±0,1 Nm  
*COUPLE DE SERRAGE*

CODE 8 : 05 284 20  
LOOSE UNC STUDS MIL-S-12883/41 - EDIT C



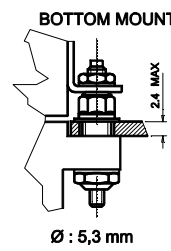
Ø : 5,3 mm



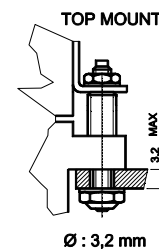
Ø : 3,2 mm

MOUNTING TORQUE / *COUPLE DE SERRAGE*  
NUT 4/40 : 0,45 ±0,1 Nm  
NUT 10-32 : 1,2 Nm MAX

CODE 9 : 05 284 21  
FIXED UNC STUDS PER MIL-S-12883/41 - EDIT C



Ø : 5,3 mm



Ø : 3,2 mm

MOUNTING TORQUE / *COUPLE DE SERRAGE*  
NUT 4/40 : 0,45 ±0,1 Nm  
NUT 10-32 : 2 Nm MAX

**WIRE INSULATION DIAMETER FOR SEAL TO GROMMET**  
**JOINT D'ETANCHEITE**

CODE A
Recommended for contact code 8 Dia: 1.65.....2.76mm

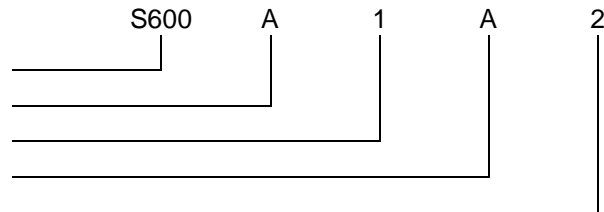
**CONTACT SIZE AND STYLE**  
**TAILLE ET STYLE DE CONTACTS**

CODE 0	CODE 8
Without contacts <i>Contacts non fournis</i>	LEACH reference : 05 910 00 Crimp end to accomodate: AWG 16-18-20 Contact mating end: AWG: 16  In accordance with: Mil-C-39029-533

**SOCKET NUMBERING SYSTEM**  
**SYSTEME DE REFERENCES**

Basic series designation | Référence de base

1. Terminal layout | Type de sorties
2. Mounting hardware | Type de visserie
3. Grommet to seal on wire insulation | Joint d'étanchéité
4. Contact size and style | Taille et style de contact



Exemple : S600-A1A2

**MS/LEACH CROSS PART NO, AND MATING RELAYS**  
**SYSTEME DE REFERENCES**

MS - Number	S600/S301 REFERENCE
M12883/47-001	S600-A8A8
M12883/47-002	S601-B8A8
M12883/47-004	S600-A9A8
M12883/47-005	S601-B9A8