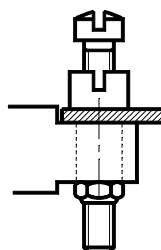


Basic socket series designation for :  
Series F250, F257, W260, GP5, 144

Applicable track:  
MT-3000-003

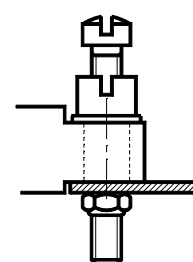
**BOTTOM MOUNTING**  
MONTAGE SOUS STRUCTURE

HRCW-1JV2



**TOP MOUNTING**  
MONTAGE SUR STRUCTURE

HRCW-22JV2



**GENERAL CHARACTERISTICS**  
CARACTERISTIQUES GENERALES

Dimensions in mm  
Tolerances, unless otherwise specified,  $\pm 0.12$ mm

Temperature range / Température d'utilisation	-65° C to +125° C.
Weight / Masse	10g max.
Crimp tool / Rigidité diélectrique	
Contacts to contacts at sea level / Entre contact et contact au niveau de la mer	2700 Veff / 50 Hz
Contacts to ground at sea level / Entre contact et masse au niveau de la mer	2250 Veff / 50 Hz
Contacts to contacts at altitude 25.000m / Entre contact et contact à 25 000 m	560 Veff / 50 Hz
Contacts to ground at altitude 25.000m / Entre contact et masse à 25 000 m	500 Veff / 50 Hz

**AMERICAS.**

Tel: +1 714-736-7599  
<http://www.esterline.com/powersystems>

**EUROPE.**

Tel: +33 3 87 97 31 01  
Fax: +33 3 87 97 96 86

**ASIA**

Tel: +852 2 191 3830  
Fax: +852 2 389 5803