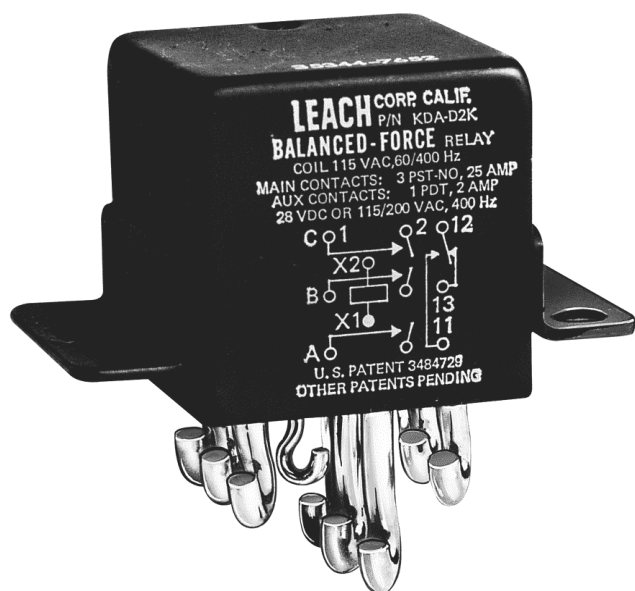


ENGINEERING DATA SHEET

SERIES KDA

RELAY - NONLATCH
3 PST/NO +AUX, 25 AMP



APPLICATION NOTES:

[102](#)
[007](#)

APPLICABLE SOCKET:

[SO-1061-8916](#)

All welded construction

Contact arrangement **3 PST configuration with 1 PDT, 2 AMP auxiliary contacts in one inch cube**

Designed to the performance standards of **MIL-PRF-6106**

PRINCIPLE TECHNICAL CHARACTERISTICS

Contacts rated at **28 Vdc and 115/200 Vac, 400 Hz, 3Ø**

Weight **0.188lb max**

Dimensions **1.01in x 1.01in x 1.00in**

Hermetically sealed, corrosion resistant metal can.
Detail specifications and ordering data appear on the following pages.

Contact factory for information on MIL-qualified part numbers.

CONTACT ELECTRICAL CHARACTERISTICS

Contact rating per pole and load type [1]	Load current in Amp				
	@28 Vdc	@115 Vac 400 Hz	@115/200 Vac 400 Hz, 3Ø	@115/200 Vac 60 Hz, 3Ø [9]	@230/400 Vac 400 Hz [11]
Resistive [2]	25	25	25	2.5	5
Inductive [3]	12	15	15	2.5	5
Motor	10	10	10	2	2
Lamp	5	5	5	1	2
Overload	50	80	80	N/A	N/A
Rupture	60	100	100	N/A	N/A
Contact rating of auxiliary contacts at 28 Vdc or 115 Vac 400 Hz			Resistive 2 Amp	Inductive 1 Amp	Lamp 0.5 Amp



Featuring **LEACH**® power and control solutions
www.esterline.com

AMERICAS
6900 Orangethorpe Ave.
P.O. Box 5032
Buena Park, CA 90622

Tel: (01) 714-736-7599
Fax: (01) 714-670-1145

EUROPE
2 Rue Goethe
57430 Sarralbe
France

Tel: (33) 3 87 97 31 01
Fax: (33) 3 87 97 96 86

ASIA
Units 602-603 6/F Lakeside 1
No.8 Science Park West Avenue
Phase Two, Hong Kong Science Park
Pak Shek Kok, Tai Po, N.T.
Hong Kong
Tel: (852) 2 191 3830
Fax: (852) 2 389 5803

Data sheets are for initial product selection and comparison. Contact Esterline Power Systems prior to choosing a component.

COIL CHARACTERISTICS (Vac)**SERIES KDA**

CODE	Vac 400 Hz		Vac 50-400 Hz		Vac 400 Hz
	E	F	J	K	T [11]
Nominal operating voltage	28	115	28	115	230
Maximum operating voltage	30	122	30	122	248
Maximum pickup voltage					
- Cold coil at +125° C	22	90	23	95	180
- During high temp test at +125° C	24.4	95.4	24.6	100	185
- During continuous current test at +125° C	25.6	103.5	25.9	105	195
Maximum drop-out voltage	10	30	10	30	60
Coil current maximum milliAmperes at +25° C	225	40	120	28	22

GENERAL CHARACTERISTICS

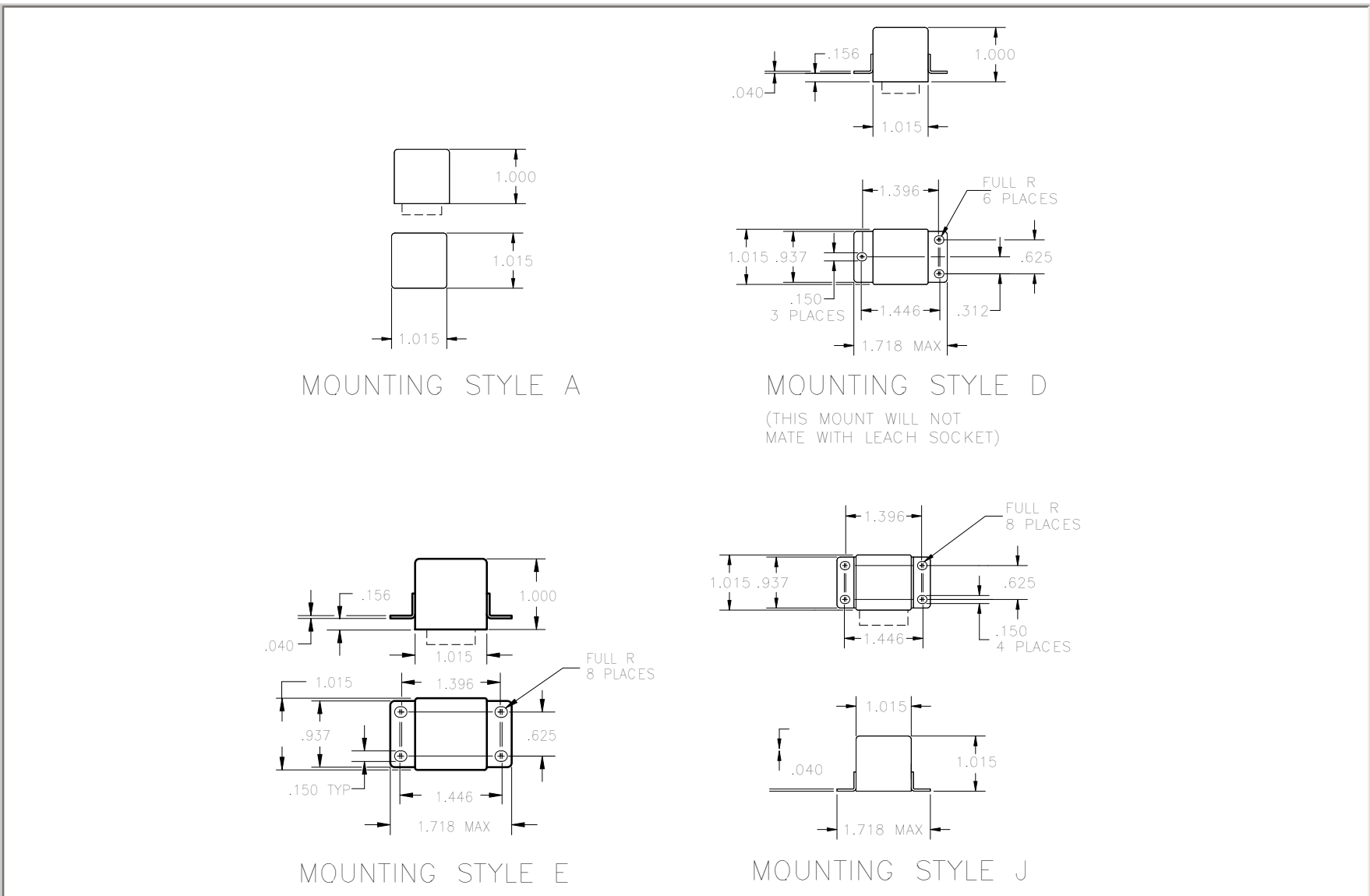
Temperature range	-70°C to +125°C
Minimum operating cycles (life) at rated load	50,000 [3]
Minimum operating cycles (life) at 25% rated load	200,000
Dielectric strength at sea level	
- All circuits to ground and circuit to circuit	1250 Vrms
- Coil to ground and coil auxiliary contact gap	1000 Vrms [4]
Dielectric strength at altitude 80,000 ft	500 Vrms [5]
Insulation resistance	
- Initial (500 Vdc)	100 M Ω min
- After environmental tests (500 Vdc)	50 M Ω min
Sinusoidal vibration (A, D and E mounting)	0.12DA / 10 to 70 Hz 30G / 70 to 3000 Hz
Sinusoidal vibration (J mounting)	0.12DA / 10 to 57 Hz 20G / 57 to 3000 Hz
Random vibration	
- Applicable specification	MIL-STD-202
- Method	214
- Test condition - A, D and E mounting	1G (0.4G ² /Hz, 50 to 2000 Hz)
- Test condition - J mounting	1E (0.2G ² /Hz, 50 to 2000 Hz)
- Duration	15 minutes each plane
Shock (A, D, E and W mounting)	200G / 6 ms
Shock (J mounting)	100G / 6 ms
Maximum contact opening time under vibration and shock	10 μs
Operate time at nominal voltage@25°C	20 ms max
Release time at nominal voltage@25°C	50 ms max
Contact make bounce at nominal voltage	
- power contacts@25°C	1 ms max
- auxiliary contacts@25°C	4 ms max
Contact release break bounce at nominal voltage	0.1 ms max [8]
Weight maximum	0.188lb

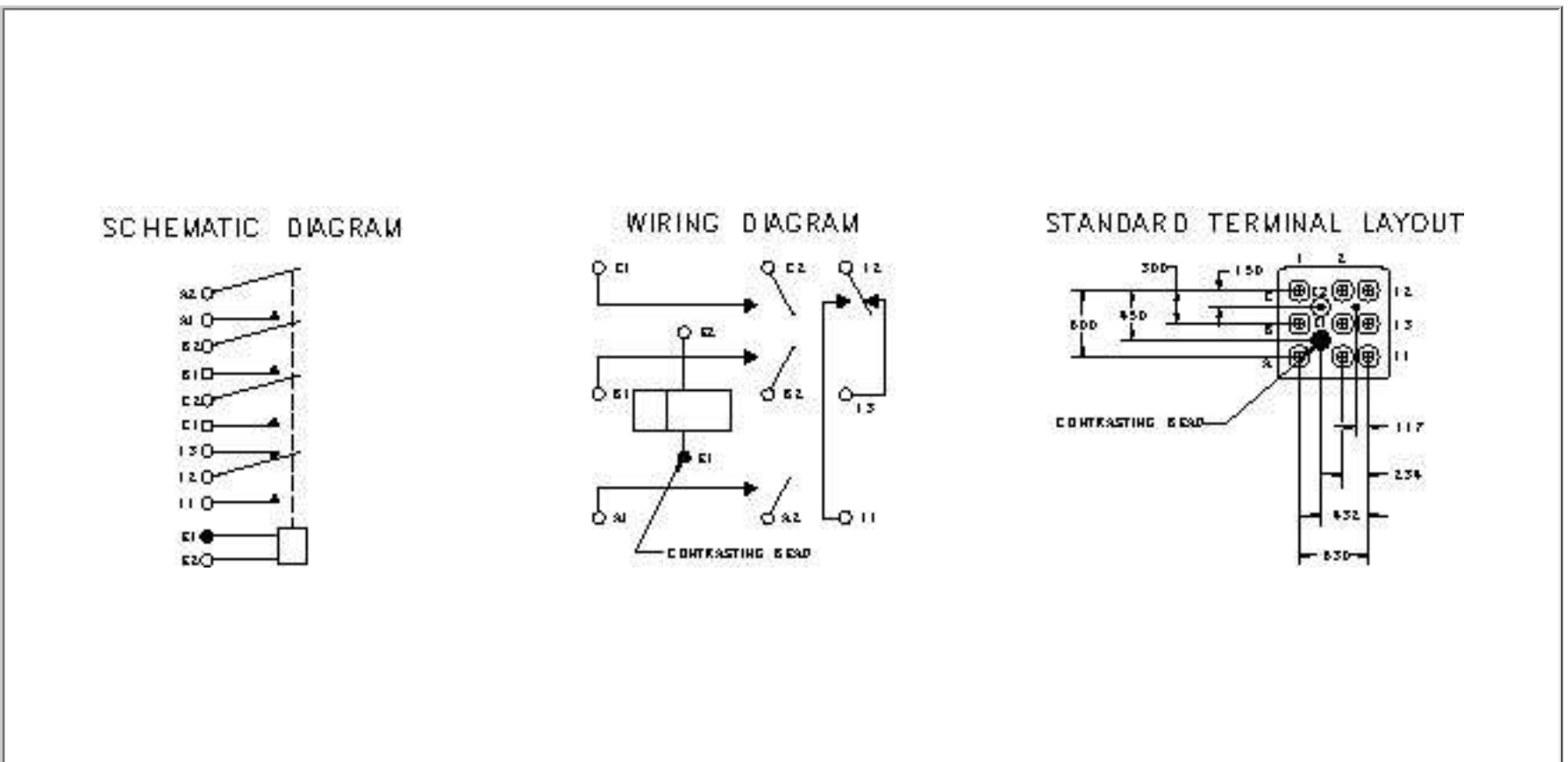
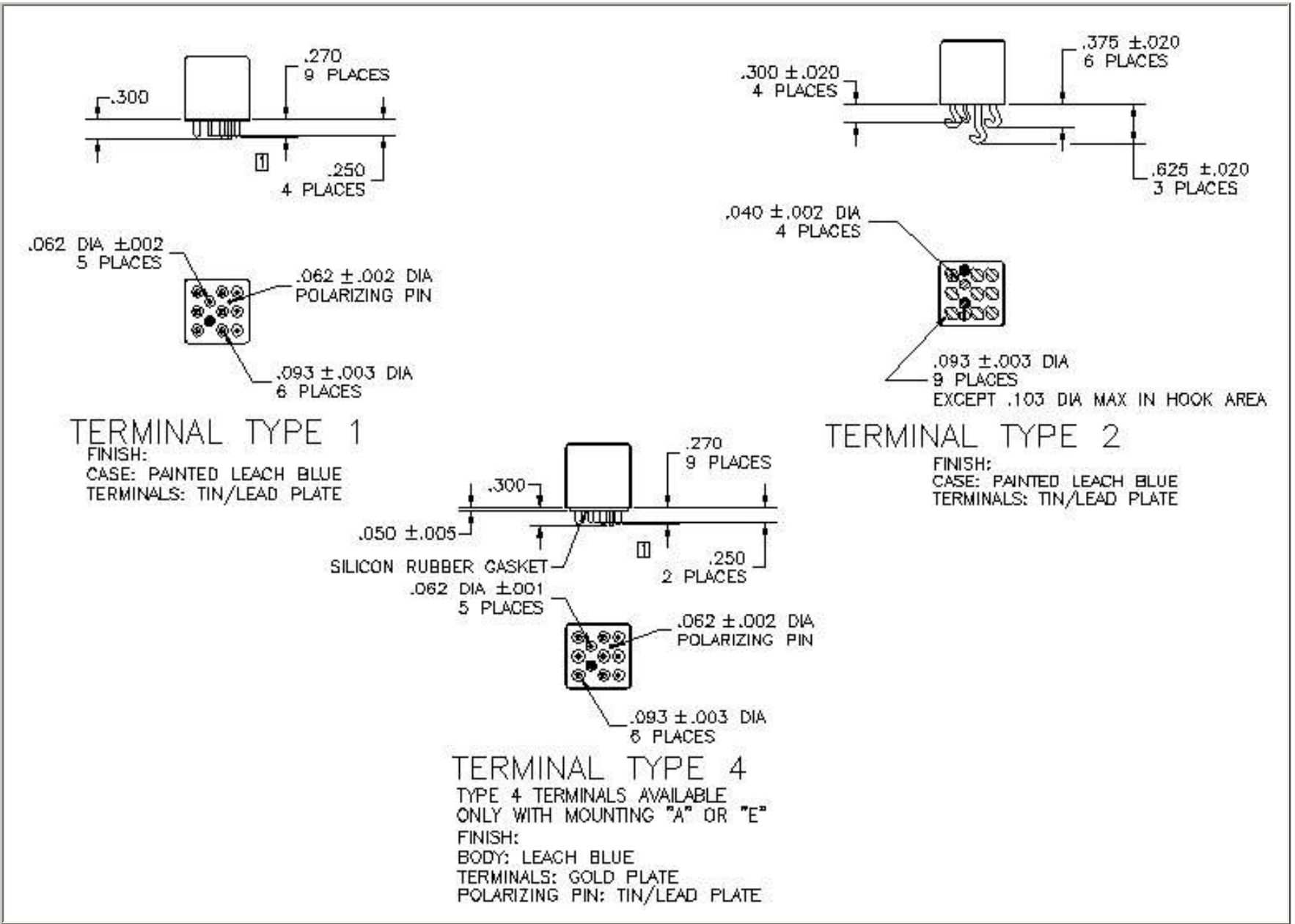
- [1] Standard Intermediate current test applicable.
- [2] For full rated load, max. temp. and altitude use no. 12 wire or larger.
Relays to be mounted to limit mounting bracket temp. to 135° C.
- [3] DC inductive load 10,000 cycles. AC inductive load 20,000 cycles.
- [4] Dielectric of auxiliary contact gap after life tests: 750 Vrms.
- [5] 500 Vrms with silicone gasket compressed, 350 Vrms all other conditions.
- 6. Reference military specification: MIL-PRF-6106, and MIL-PRF-6106/13.
- 7. Special models available: dry circuit, established reliability testing, etc.
- [8] Applicable to power contacts only.
- [9] 60 Hz load life, 10,000 cycles.
- [10] Time current relay characteristics per MIL-PRF-6106.
- [11] Temperature range:
Non-operating -62°C to +95°C
Operating -54°C to +71°C

NUMBERING SYSTEM

	KDA-	A	4	F
Basic series designation_____				
1-Mounting Style (A,D,E,J)_____				
2-Terminal Types (1,2,4) [1]_____				
3-Coil Voltage see coil characteristics (E,F,J,K or T)_____				

MOUNTING STYLES





STANDARD TOLERANCE: .XX ±.03; .XXX ±.010