



**APPLICATION NOTES:**

- [101](#)
- [102](#)
- [007](#)

Balanced-Force Design  
Hermetically sealed

Designed to the performance standards of **MIL-PRF-6106**

**PRINCIPLE TECHNICAL CHARACTERISTICS**

Contacts rated at **28 Vdc and 115 Vac, 400Hz, 1 Ø and 115/200 Vac, 400Hz, 3 Ø**

Weight **1.70lbs max.**

Special units available upon request, including models with auxiliary contacts.

**CONTACT ELECTRICAL CHARACTERISTICS**

Contact rating per pole and load type	Load current in Amps				
	28 Vdc	115 Vac 400 Hz	115/200 Vac 400 Hz, 3 Ø	28 Vdc [2]	115 Vac 400 Hz [2]
Resistive	50	90	90	120	120
Inductive [1]	30	90	90	80	120
Motor	30	60	60	80	80



Featuring **LEACH®** power and control solutions  
[www.esterline.com](http://www.esterline.com)

**AMERICAS**  
6900 Orangethorpe Ave.  
P.O. Box 5032  
Buena Park, CA 90622

Tel: (01) 714-736-7599  
Fax: (01) 714-670-1145

**EUROPE**  
2 Rue Goethe  
57430 Sarralbe  
France

Tel: (33) 3 87 97 31 01  
Fax: (33) 3 87 97 96 86

**ASIA**  
Units 602-603 6/F Lakeside 1  
No.8 Science Park West Avenue  
Phase Two, Hong Kong Science Park  
Pak Shek Kok, Tai Po, N.T.  
Hong Kong

Tel: (852) 2 191 3830  
Fax: (852) 2 389 5803

Data sheets are for initial product selection and comparison. Contact Esterline Power Systems prior to choosing a component.

**COIL CHARACTERISTICS (Vdc)****SERIES LC**

CODE	A Vdc	N Suppressed [5] Vdc
Nominal operating voltage	28	28
Maximum operating voltage	29	29
Pick-up voltage, maximum		
- Nominal	18	18
- High temp test	20	20
- Continuous current test	22.5	22.5
Drop-out voltage, maximum	7	7
Coil resistance in Ohms $\pm 20\%$ at +25° C	77	77
Coil current max. @ nom. Volt. and +25° C	0.40 Amp	0.40 Amp

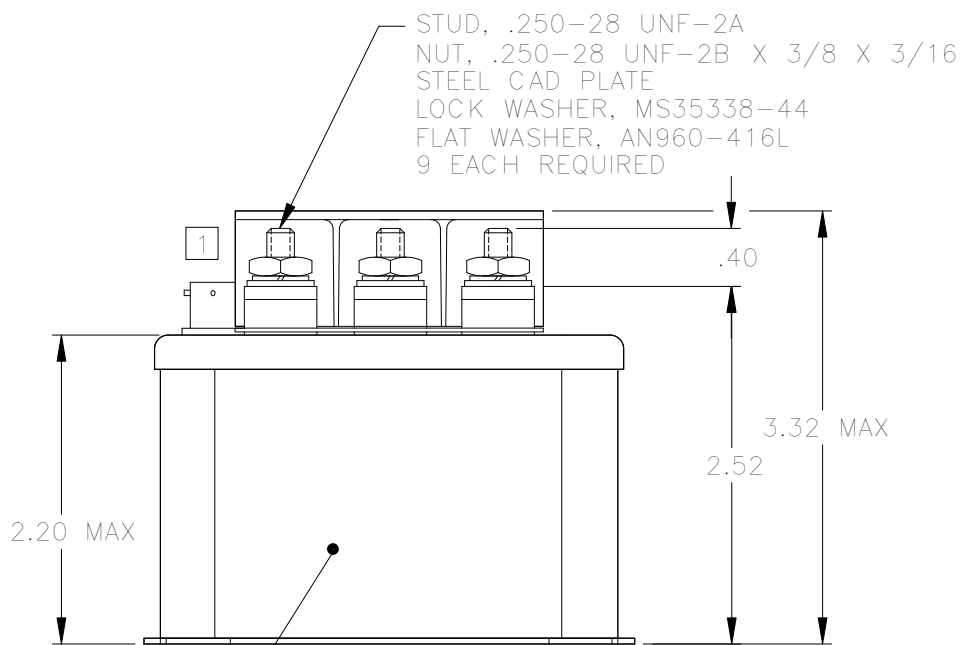
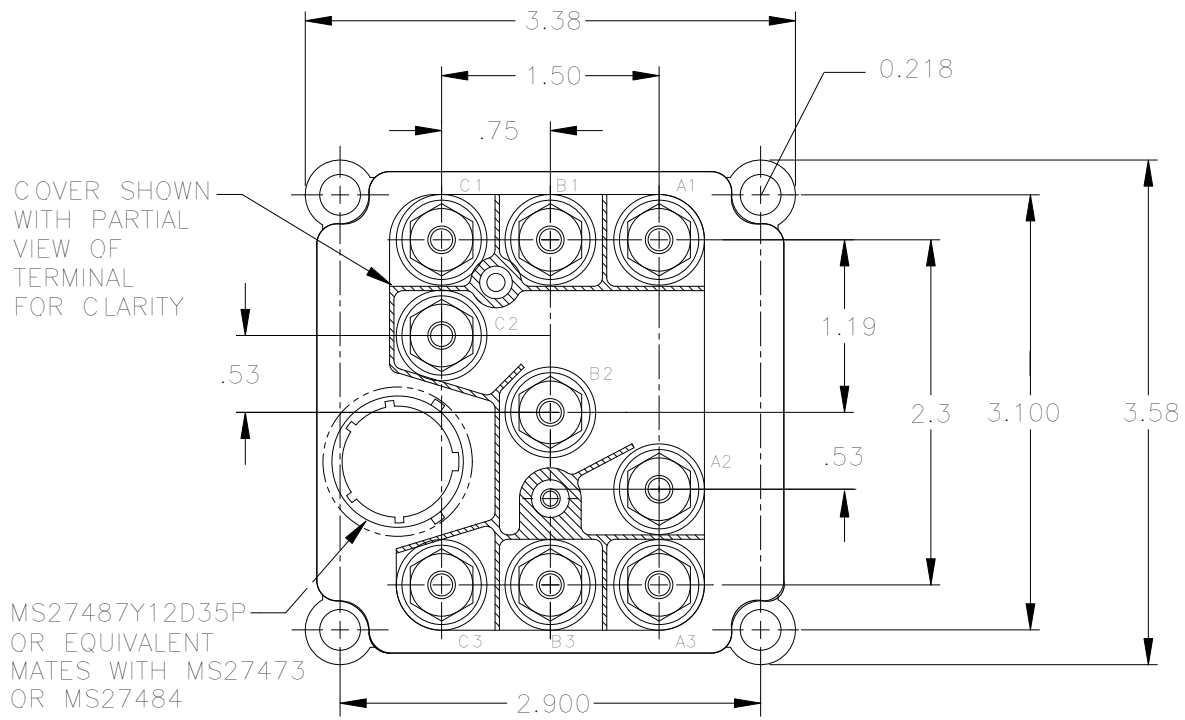
**GENERAL CHARACTERISTICS**

Temperature range	-55°C to 71°C
Minimum operating cycles (life) at rated resistive load	50,000
Minimum operating cycles (life) at 25% rated resistive load	100,000
Dielectric strength at sea level	
- All circuits to ground and circuit to circuit	1500 VRMS
- Coil to ground and aux. contacts	1250 VRMS
Dielectric strength at altitude	
- Main contacts	700 VRMS
- Coil and auxiliary contacts	500 VRMS
Insulation resistance	
- Initial (500 Vdc)	100 M $\Omega$ min
- After environmental tests (500 Vdc)	50 M $\Omega$ min
Sinusoidal vibration	10 G / 55 to 1000 Hz
Shock (6 ms duration)	15 G
Maximum contact opening time under vibration and shock	10 $\mu$ s
Operate time at nominal voltage (Including bounce)	40 ms max
Release time at nominal voltage (Including bounce)	40 ms max [4]
Contact bounce at nominal voltage	3 ms max
Weight	Noted
Overload at 115/200 Vac, 400 Hz	600 Amps
Rupture at 115/200 Vac, 400 Hz	800 Amps
Altitude	50,000 Feet

**NOTES**

- [1] Inductive load life, 20,000 cycles.  
 [2] Ratings for double make terminal type 2, 4, & 6.  
 3. Alternate contact configurations and other special models available upon request. Please contact factory.  
 [4] Greater values for suppressed coils.  
 [5] Suppressed "N" coil has back EMF suppression to 62 Volts max.  
 6. This series drawing is for general use only. Please consult factory for special requirements.

MOUNTING STYLE A ONLY



NAMEPLATE (NEAR SIDE)  
CIRCUIT DIAGRAM FAR SIDE

1 METRIC TERMINALS M6  
AVAILABLE

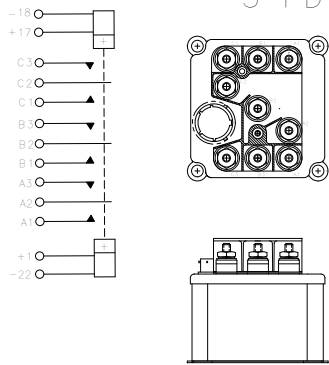
WEIGHT 1LB 11OZ. MAXIMUM

COIL CIRCUIT CONFIGURATION

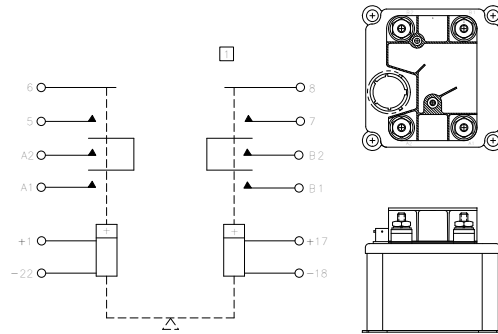


Standard Tolerance: .XX ±.03, .XXX ±.010

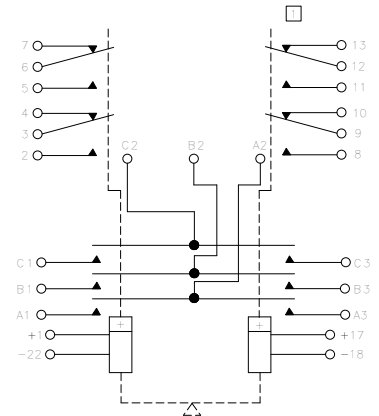
TERMINAL TYPE 1  
3 PDT



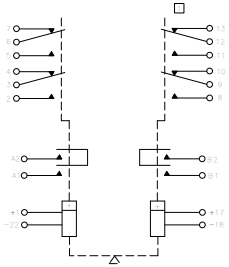
TERMINAL TYPE 2  
SPDT WITH 2 PST-N.O. AUXILIARY CONTACTS



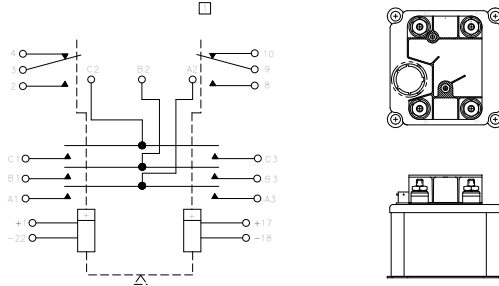
TERMINAL TYPE 3  
3 PDT WITH 4 PDT AUXILIARY CONTACTS



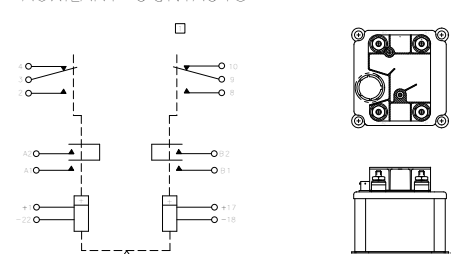
TERMINAL TYPE 4  
SPDT DOUBLE MAKE WITH 4 PDT AUXILIARY CONTACTS



TERMINAL TYPE 5  
3 PDT WITH 2 PDT AUXILIARY CONTACTS



TERMINAL TYPE 6  
SPDT DOUBLE MAKE WITH 2 PDT AUXILIARY CONTACTS



TERMINAL TYPE 9

IS A GENERAL CATEGORY USED FOR ALL TERMINAL TYPES NOT ILLUSTRATED. FOR OTHER VARIATIONS OF TERMINAL CONFIGURATIONS - PLEASE CONTACT FACTORY

NOTES:

- 1 AUXILIARY CONTACT RATING: 28 VDC OR 115 VAC
- RESISTIVE 5 AMP
- INDUCTIVE 3 AMP
- LAMP 1 AMP
- BOUNCE AT NOMINAL VOLTAGE .004 SEC MAX
- OTHER AUXILIARY CONTACT FORMS AVAILABLE, INCLUDING LOW LEVEL CAPACITY

NOTE: Although all configuration and/or terminal type options are available, some combinations may require a setup charge and be subject to minimum order size.

NUMBERING SYSTEM

	LC	-	X	0	X
Relay family	_____				
1-Mounting Style (A,B,Etc)	_____				
2-Terminal & Circuit	_____				
3-Coil Voltage(A,B,C,F,N)	_____				